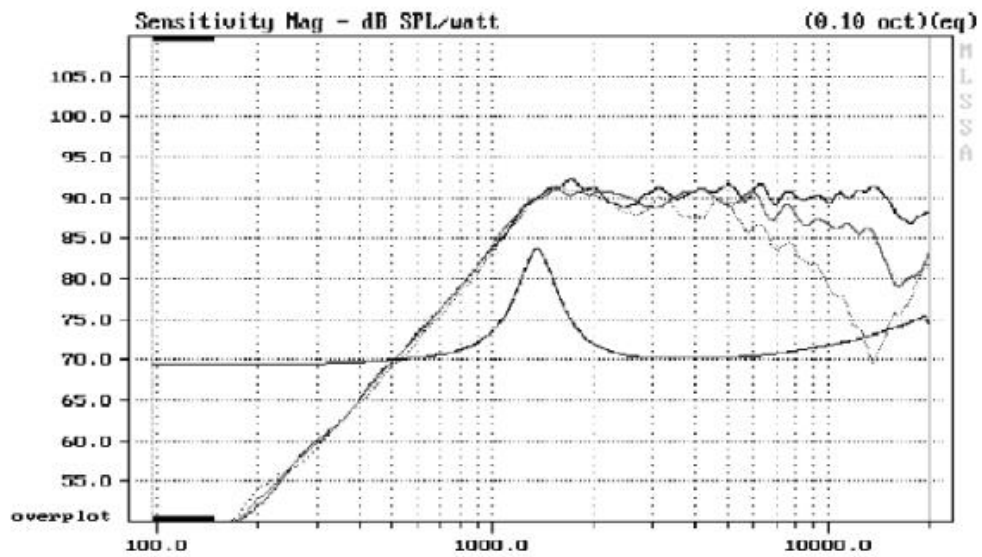


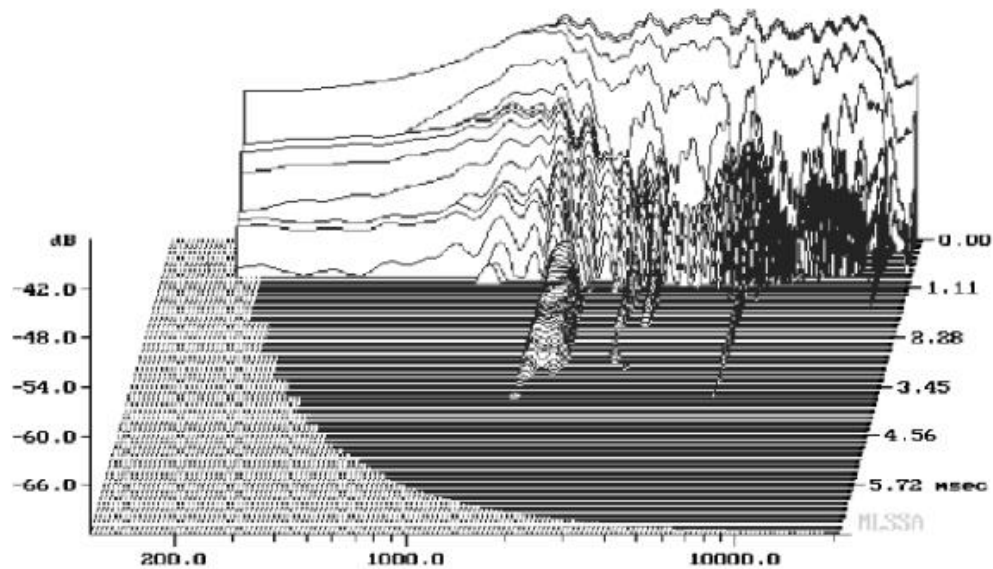


Impedance	8 ohms	V.C. Diameter	25 mm
Fs	- Hz	V.C. Length	1.6 mm
RMS Power (iec)	60 W	V.C. Former	aluminum
Sensitivity (2.83V/1m)	91.0 dB	V.C. Layers	2
Re	- ohms	Diaphragm	titanium
Le	- mH	Faceplate	polymer
Xmax	± 0.05 mm	Net Weight	54 gr

Response Curve



Spectral Decay Plot



Dimensions in mm

